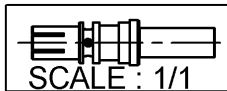
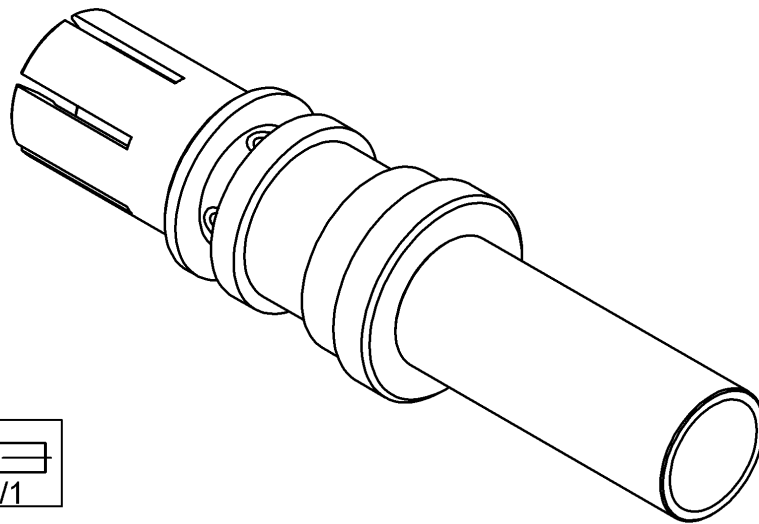
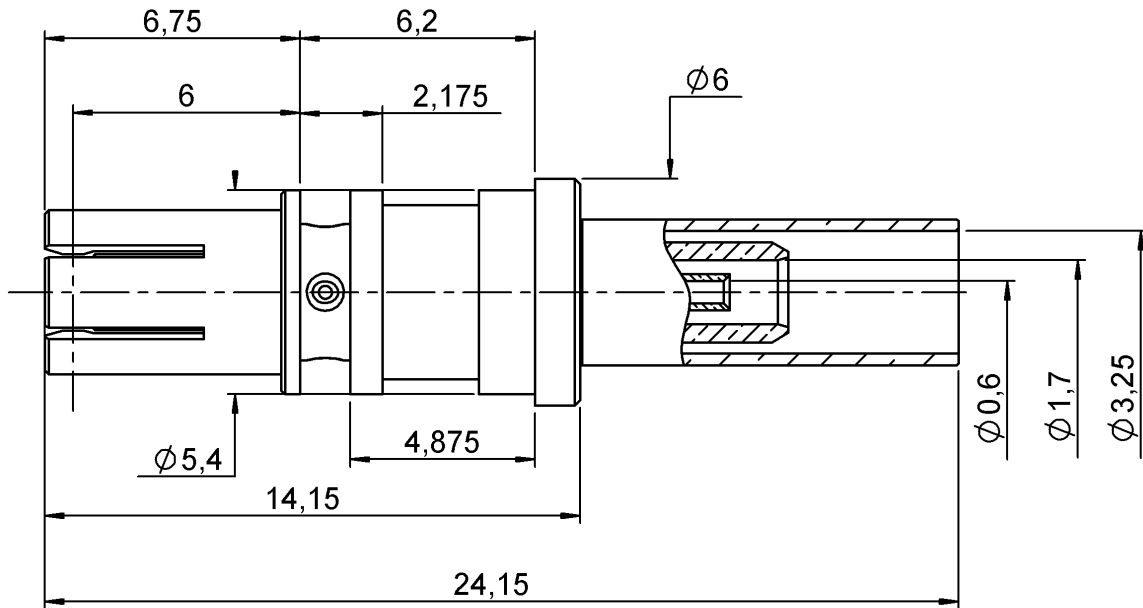


STRAIGHT FEMALE PLUG CRIMP TYPE

R114.082.325

CABLE 2.6/50 S

Series : **SMB**
CARLOCK



All dimensions are in mm.



COMPONENTS	MATERIALS	PLATINGS (µm)
BODY	BRONZE	NICKEL 2
CENTER CONTACT	BRONZE	GOLD 0.8 OVER NICKEL 2
OUTER CONTACT	-	-
INSULATOR	PTFE	-
GASKET	-	-
OTHERS PARTS	BRASS	NICKEL 2
-	-	-
-	-	-

Issue : 0323 A

In the effort to improve our products, we reserve the right to make changes judged to be necessary.



STRAIGHT FEMALE PLUG CRIMP TYPE

R114.082.325

CABLE 2.6/50 S

Series : **SMB**
CARLOCK

PACKAGING

Standard	Unit	Other
100	'W' option	Contact us

SPECIFICATION

-

ELECTRICAL CHARACTERISTICS

Impedance		50 Ω
Frequency		0-4 GHz
VSWR	1.25 +	0.000 x F(GHz) Maxi
Insertion loss		0.25 √F(GHz) dB Maxi
RF leakage	- (NA - F(GHz)) dB Maxi
Voltage rating		335 Veff Maxi
Dielectric withstanding voltage		1000 Veff mini
Insulation resistance		1000 MΩ mini

CABLE ASSEMBLY

Stripping	a	b	c	d	e	f
mm	2.40	5.50	9.40	0.00	7.00	0.00

Assembly instruction :

Recommended cable(s)
RG 316
RG 174

Cable retention

- pull off	RG 316	110 N mini
	RG 174	65 N mini
- torque		NA N.cm

MECHANICAL CHARACTERISTICS

Center contact retention		
Axial force – Mating end		10 N mini
Axial force – Opposite end		10 N mini
Torque		NA N.cm mini

TOOLING

Part Number	Description	Hexagon
.	.	.
R282.271.000	CRIMPING TOOL	3.25- SQUARE 0.72

Recommended torque		
Mating		NA N.cm
Panel nut		NA N.cm
Clamp nut		NA N.cm
A/F clamp nut		0.000 mm

Mating life		100 Cycles mini
Weight		1.750 g

OTHERS CHARACTERISTICS

**THIS COAX CAN BE USED WITH
FAKRA2 PLUG HOUSING R197.112._90**
(replaced the _ by the coding letter)

ENVIRONMENTAL

Operating temperature		-40/+110 ° C (RG 316)
		-40/+85 ° C (RG 174)
Hermetic seal		NA Atm.cm3/s
Panel leakage		NA

Issue : **0323 A**

In the effort to improve our products, we reserve the right to make changes judged to be necessary.



STRAIGHT FEMALE PLUG CRIMP TYPE

R114.082.325

CABLE 2.6/50 S

Series : SMB
CARLOCK

RECOMMENDED MOUNTING PROCEDURE

<p>1</p> <ul style="list-style-type: none"> • Slide the ferrule onto the cable • Strip the cable 	
<p>2</p> <ul style="list-style-type: none"> • Slide the centre contact on until it bottoms against the cable dielectric • Crimp the centre contact with crimping tool R282.271.000 (square 0.72) 	
<p>3</p> <ul style="list-style-type: none"> • Fan the braid 	
<p>4</p> <ul style="list-style-type: none"> • Slide the cable into the body until it bottoms against insulator 	
<p>5</p> <ul style="list-style-type: none"> • Slide the ferrule over the braid • Crimp the ferrule with crimping tool R282.271.000 (Hex:3.25) or crimping tool R282.293.000 (M22520/5-01) + dies R282.235.003 (M22520/5-03) 	

Issue : 0323 A

In the effort to improve our products, we reserve the right to make changes judged to be necessary.

